



# Beaufort County Public Works

## Stormwater Infrastructure

### Project Summary

**Project Summary:** Backache Acres Pond

**Narrative Description of Project:**

Grubbed, cleared and staked out pond perimeter.

**Completion:** Jul-11

<b>2011-045A / Backache Acres Pond</b>	<b>Labor Hours</b>	<b>Labor Cost</b>	<b>Equipment Cost</b>	<b>Material Cost</b>	<b>Contractor Cost</b>	<b>Indirect Labor</b>	<b>Total Cost</b>
AUDIT / Audit Project	1.5	\$30.72	\$0.00	\$0.00	\$0.00	\$0.00	\$30.72
HAUL / Hauling	147.0	\$3,101.74	\$2,767.11	\$6,234.31	\$0.00	\$0.00	\$12,103.16
LM / Loading Materials	118.0	\$2,745.82	\$2,240.71	\$894.21	\$0.00	\$0.00	\$5,880.74
LR / Level Road	10.0	\$234.80	\$81.40	\$52.51	\$0.00	\$0.00	\$368.71
PDCONST / Ponds - Constructed	23.0	\$513.89	\$307.28	\$84.33	\$0.00	\$0.00	\$905.50
PGC / Pond - Grubb and Clear	53.0	\$1,342.13	\$972.80	\$418.24	\$0.00	\$0.00	\$2,733.17
PTS / Portable Toilet Service	0.0	\$0.00	\$0.00	\$0.00	\$120.54	\$0.00	\$120.54
SC / Sediment Control	119.0	\$2,672.09	\$183.15	\$260.14	\$372.60	\$0.00	\$3,487.98
Indirect Labor, Services and Supplies	0.0	\$0.00	\$0.00	\$0.00	\$0.00	\$7,347.01	\$7,347.01
<b>2011-045A / Backache Acres Pond Sub Total</b>	<b>471.5</b>	<b>\$10,641.19</b>	<b>\$6,552.45</b>	<b>\$7,943.74</b>	<b>\$493.14</b>	<b>\$7,347.01</b>	<b>\$32,977.53</b>
<b>Grand Total</b>	<b>471.5</b>	<b>\$10,641.19</b>	<b>\$6,552.45</b>	<b>\$7,943.74</b>	<b>\$493.14</b>	<b>\$7,347.01</b>	<b>\$32,977.53</b>

**Before**

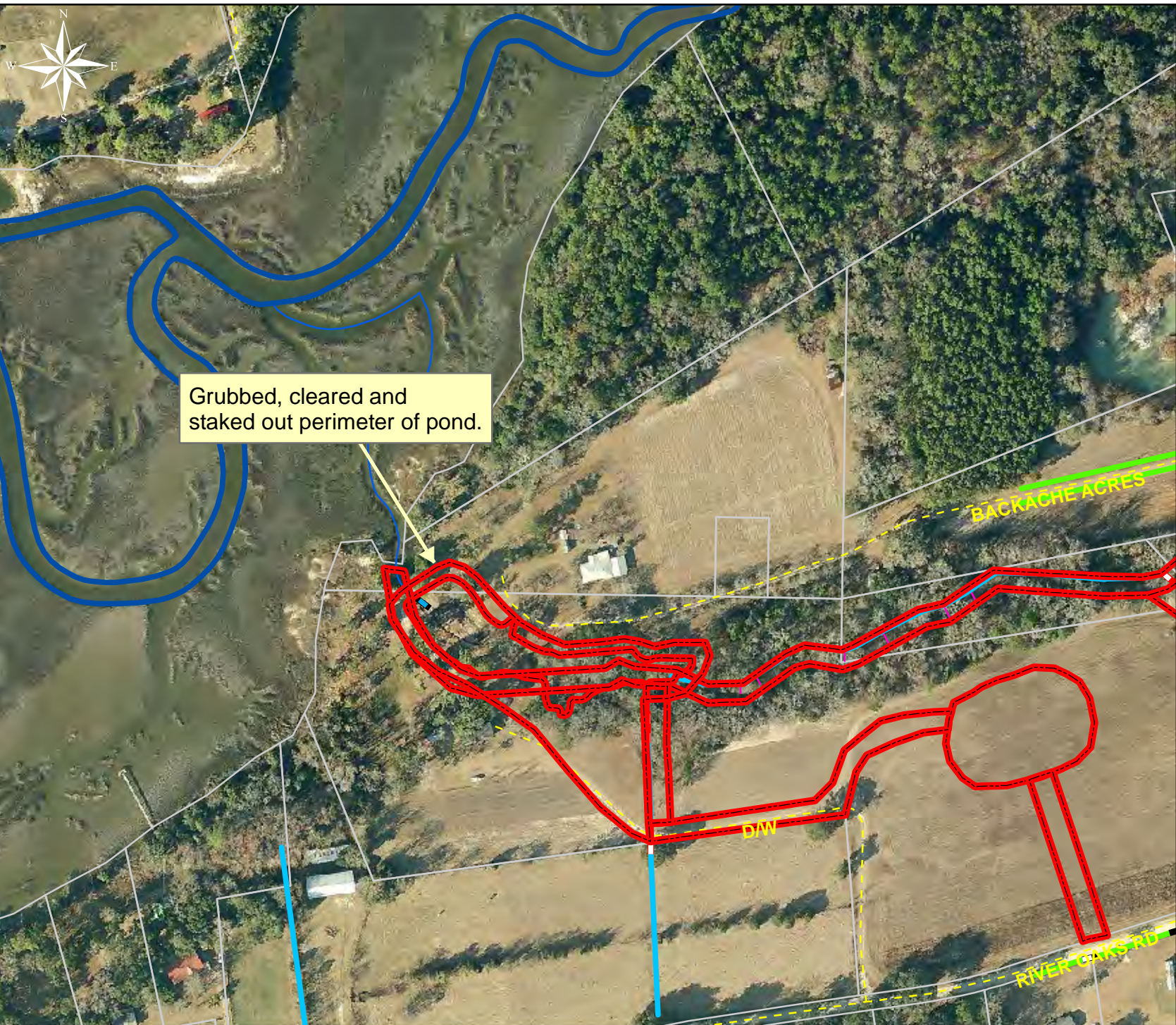


**During**



**After**





Grubbed, cleared and staked out perimeter of pond.

Project: Backache Acres Pond Map A

Activity: Water Quality Control

Project #: 2011-045A

Township: Sheldon

Completed: July 2011

Legend	
Drainage Type	
	River
	Stream
	Outfall
	Lateral
	Lateral Pipe
	Roadside
	Roadside Pipe
	Crossline
	D/W
	Access
	Piped
	Bleeder
	Parcels



1 inch = 255 feet